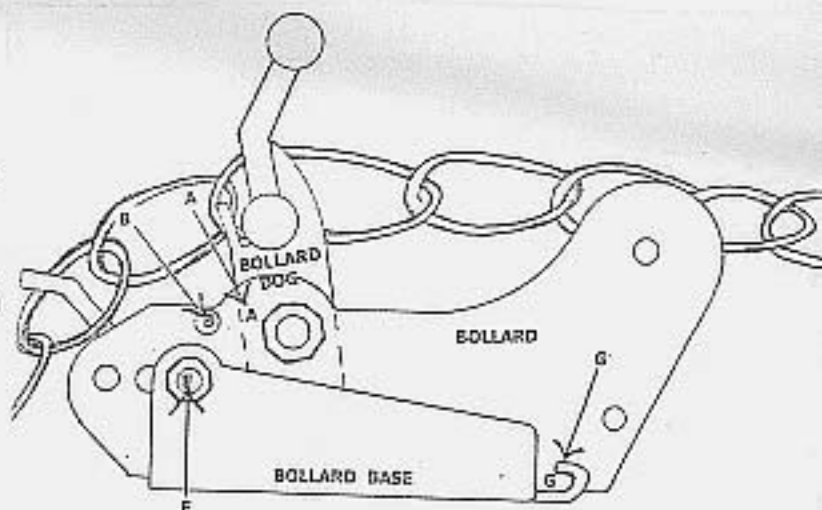


INSTRUCTIONS, PLEASE READ CAREFULLY WHEN INSTALLING THE S.A.R.C.A. BOLLARD.

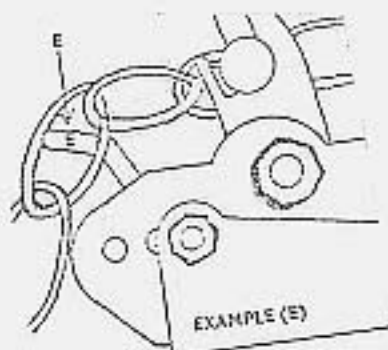
STEP ONE.

Select the best location to mount the bollard either outside or inside your boat. Pull on the anchor chain until the anchor is fully home in the bow sprit, position the bollard in line with the anchor and locate the chain in the bollard dog, then letting the chain go pull on the bollard until a clearance of approx 5 mil can be seen between the dog (arrow A) and the dog stop (arrow B) once this is achieved mark around the bollard, remove the bollard base drill and fasten the base within your previous marks, fit the bollard to it's base making sure to locate the tongue in base plate through the bollard see (G) lower the bollard into it's base and secure with the fixing bolt (F) if you over tighten this bolt damage to the bollard could be the result. The bollard must be installed so that it's operational Position is horizontal.



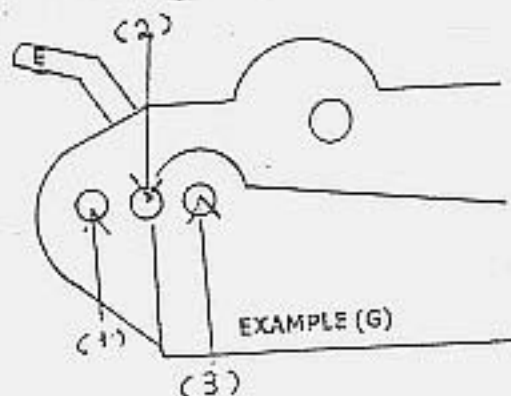
STEP TWO.

After you have completed step one double check the Clearance between arrows (A) and (B), before motoring your boat always check you have selected the correct chain link as to once again achieve the Clearance between arrows (A) and (B), at the rear of the bollard there is a secondary chain stop see (E) make sure before motoring the anchor chain is located over this secondary chain stop.



STEP THREE.

There are three holes in the rear of the bollard, see example (G) If you should change your anchor or anchor chain and the clearance between arrows (A) and (B) are no longer achievable, rather than remounting the bollard base to achieve this clearance one of the three holes will normally service .

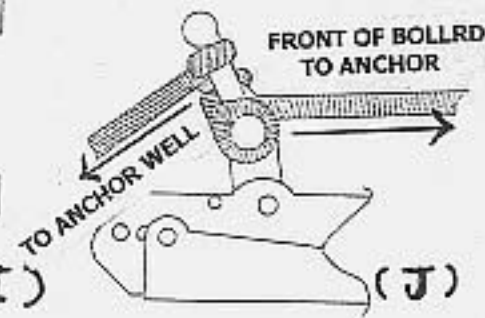
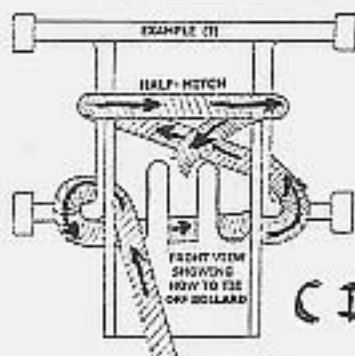


STEP FOUR.

It is essential to make sure you tie off the anchor rope on the bottom section of the bollard, and carefully take note of how it's tied off. See example (I) and (J). Incorrect tying off could damage the bollard.

STEP FIVE.

Failing to strictly follow these instructions could lead to injury or property loss, if you don't fully understand these instructions consult your local dealer before installing them. Before storing your boat remove the bollard from it's base and wash in warm soapy water.



DISCLAIMER

Human error plays a major part in most accidents and property loss. Because of this Anchor Right will not accept responsibility for it's products should you choose to install them.